

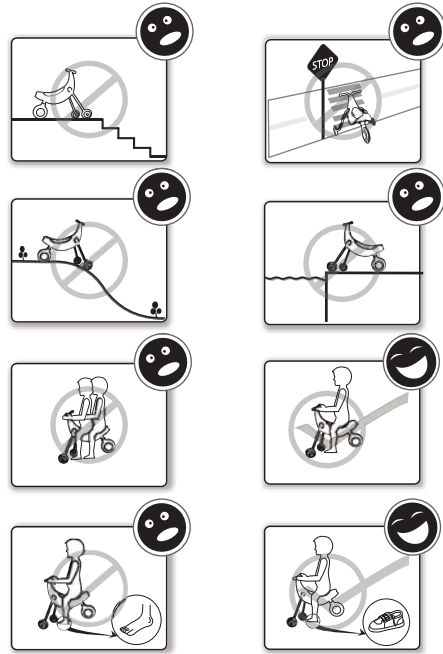
# Cheeky Chick

## Instruction Manual

### Warning



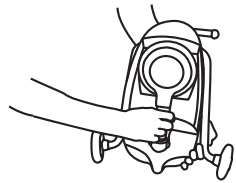
- This product is intended only for use by children between the ages of 15 and 36 months
- This product is intended only for use by anyone that weighs less than 20 kilos
- Direct adult supervision is required at all times.
- The instruction manual contains important information, please make sure you and your child understand the warnings.
- Never allow your child to use the trike near stairs swimming pools, lakes or other bodies of water, hills, slopes, roads, alleyways, parking lots or other areas where cars are present.
- Do not ride at night or in poor visibility conditions.
- The Cheeky Chick is intended to be used on dry, flat and clean surfaces. Do not use it on gravel, sand, mud or similar surfaces.
- The child must wear solid shoes when riding the Cheeky Chick, do not ride barefoot or in slippers. Make sure that shoelaces are tied.
- Never allow more than one rider at any time on the tricycle.
- Before each ride please check the tricycle carefully for loose, damaged or missing parts. Replace worn or damaged parts immediately.
- The Cheeky Chick does not need to be lubricated.
- When the Cheeky Chick is dirty simply clean with a wet cloth and some mild soap, do not use aggressive cleaning fluids as they will cause the plastic to deteriorate.
- Please keep the instruction manual, it contains important information.



### Set-up

- No tools are required to set up the Cheeky Chick
- The setup and folding of the Cheeky Chick must be done by a responsible adult. Never allow a child to fold or set-up the Cheeky Chick.
- Be careful when folding or unfolding up the Cheeky Chick, fingers can get trapped if due care is not taken

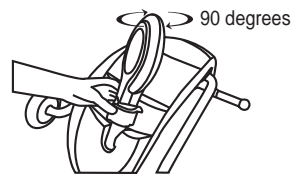
① Hold the Cheeky Chick with the handlebars towards you



② Lift the ring and turn it to the right



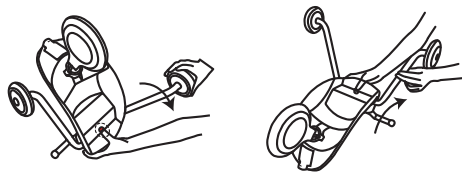
③ Pull the wheel up and turn it 90 degrees to the right



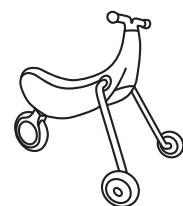
④ Release the ring and turn it so that it snaps into the locking mechanism.



⑤ Press the button down and forward until front legs are loose, swing legs forward until they are locked in the set-up, ride position



⑥ Make sure all locks have securely snapped by trying to move the front legs and rear wheel. If everything is securely locked, place the toy on the floor



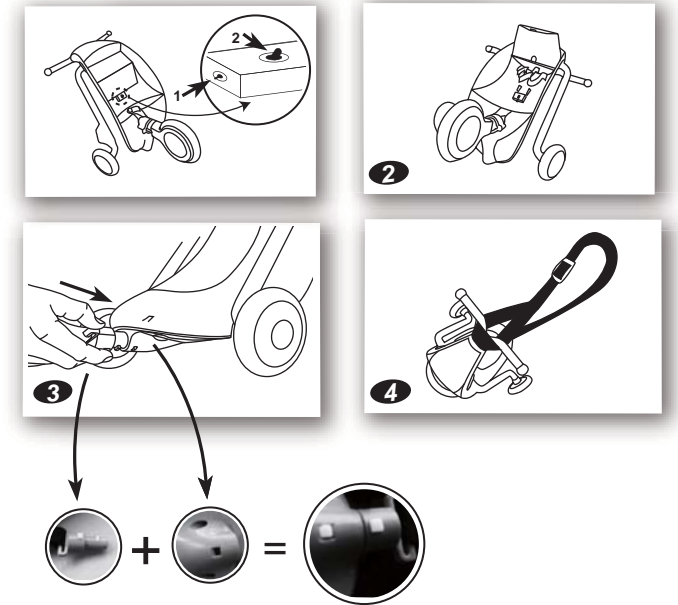
### Folding

To fold the Cheeky Chick simply reverse the set-up sequence. Please remember to fold the front wheel first. Make sure that front wheels and rear wheel are securely locked in the folded position before carrying the Cheeky Chick.

### Carrying Strap

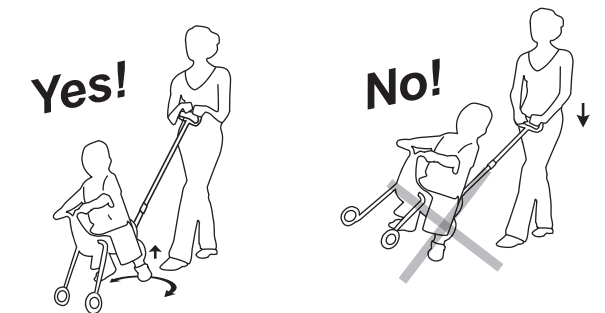
Cheeky Chick comes with her own carrying strap

1. The strap is stored in a compartment underneath the seat
2. Lift the rear wheel as described in the section "set-up"
3. To open the compartment push the side button inwards
4. While holding the button in, push the front button towards the rear wheel.
5. When both buttons are pushed, the compartment will open and you can remove the strap
6. Fold rear wheel as detailed above in "Folding"
7. Push the connector plug attached to the strap into the docking slot on the rear of the Cheeky Chick making sure it is aligned correctly and insert and turn until you hear a "clicking sound"
8. Now sling the front loop around the handlebars
9. Adjust length of strap if required
10. You can carry the Cheeky Chick either over the shoulder or on your back



### Parent Handle (Optional)

If you have purchased the optional parent handle (item number 4111) please note that to steer the Cheeky Chick with the parent handle you need to lift the REAR WHEEL slightly to change direction. Due to the unique design with one rear wheel the Cheeky Chick will become unstable if you attempt to change direction by pressing down on the parent handle and lift the front wheel.



okiedog limited  
www.okiedog.com  
Customer service: cs@okiedog.com

